



precision
turning
of complex
parts

American Turned Products specializes in the machining of millions of complex components used in the automotive, fluid power, medical, electrical and other markets. These pieces typically require a combination of drilling, boring, honing, milling, threading and cutting within the primary operation. Our fully automated, multiple-station, precision machining equipment, highly skilled production team and our dedication to lean manufacturing principles ensure delivery of competitively priced parts that are free of defects.

Best In Class

Achieving "Best in Class" status is a result of exceeding benchmarks in critical measures that drive Operational Excellence at American Turned. Although we constantly measure more than 100 variables, our focus on lean manufacturing principles, lowest labor cost per part, operational flexibility and zero defects are central to our mission of being a world-class supplier.



High Volume Throughput

American Turned Products' investment in multi-station, CNC machining centers produces consistent, high quality components, reduces downtime and eliminates the need for costly secondary operations.

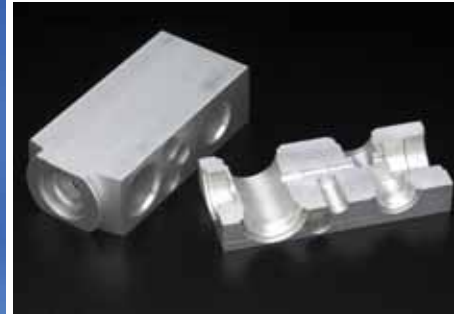
Complex Parts & Components

Focusing on a unique segment of the metalworking industry, American Turned machines parts requiring independent turning operations while maintaining extreme tolerances within the primary operation.

Our markets are:

- Occupant Safety Systems
- Fluid Power Systems
- Engine Systems & Components
- Medical Devices
- Electrical Parts
- Marine & Corrosive Components

fluid power systems automotive



medical marine & corrosive engine components engine systems

From Concept to Production

With drawings and dimensions in hand, the American Turned Products' engineering team reviews customer's specifications and provides recommendations to improve design, optimize production and minimize the risk of defective parts. Once approved, tools are designed and cut in-house. Then Prototype and Production Planning begins scheduling.

Manufacturing Excellence

American Turned is an industry leader in accuracy and productivity, measured across number of defects in parts-per-million shipped and on-time delivery. Our Lean Manufacturing Principles optimize production and reduce downtime and waste, keeping our per-part cost low.

Complex Machining Operations

We fill orders that demand the production of millions of parts requiring 8, 10 or even more complex machining operations while maintaining as little as 3 to 5 microns tolerance on critical dimensions. These challenging requirements are commonplace for American Turned Products.



flexibility

Operational Flexibility

Our production schedules are responsive to changes in customer demands. We maintain this flexibility through a variety of programs and practices aimed at producing industry-leading quality while remaining cost-competitive worldwide, including:

- Wide diversity of machining systems
- In-house tool development
- Large inventory of various raw materials
- Robotic work centers
- Automated laser inspection systems
- Integrated secondary operations:
 - Bore finishing
 - Centerless grinding
 - Thermal deburring



robotics
manufacturing
excellence

Zero Defects

At American Turned, we mistake-proof at the machine level, exceed rigorous quality control standards, continually monitor processes and provide 100% product verification, earning American Turned its Best in Class quality recognition.

Quality Assurance

ISO/TS 16949:2002 registration, VDA audit compliance, and Quality System Basics are among the standards used to drive the quality process at American Turned Products. Capabilities of our Quality Assurance metrology labs are:

- Coordinate Measuring Machines (CMM)
- Vision Systems
- Laser inspection
- Contour and roundness gauging
- Hardness testing
- Micro-particle test stand for cleanliness specifications

Process Monitoring & Analysis

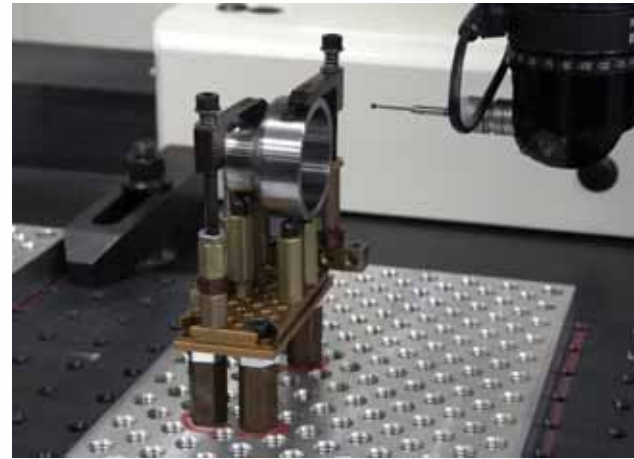
We rely on statistical process controls throughout our operations to optimize production and reduce downtime and waste. American Turned monitors, analyzes and continually improves upon production quality through Advanced Planning initiatives, certified operator training, Six Sigma, mistake-proofing at the machine level, Automated Quality Verification Systems and lot control.

Quality Policy Statement

"Our adherence and commitment to defined systems ensures our success for providing excellence to our customers and continual improvement and prosperity of our organization".



zero defects



quality assurance process monitoring & analysis



Corporate Headquarters

7626 Klier Drive
Fairview, PA 16415
Phone: 814.474.4200

Erie Plant
1944 Wager Road
Erie, PA 16509
Phone 814.824.7600

www.atpteam.com



CERTIFICATE NO. TS77406